

Unit 7: Integers Study Guide

019
cher: RAN
MATH
t ID
Name:

Period:

1. What is the opposite of the integer -16?

16

2. What is the opposite of the integer -45?

45

3. What is the opposite of the integer 695?

-695

4. What is the opposite of the integer 92.5?

-92.5

Identify the integer that represents the situation and tell what zero means in that situation.

5. A team loses 12 yards on a football play.

-12

6. The peak of the mountain is at 4,300 ft above sea level.

4,300

7. Ms. Rankin withdraws \$50.75 from her bank account.

-50.75

8. Mrs. Nessmith deposits \$85.99 into her bank account.

85.99

9. Write a situation for the integer -5.
A dolphin swam 5 ft below sea level.

10. Write a situation for the integer 15.
My kite flew 15 ft in the sky.

Compare the following integers by writing $>$, $<$, or $=$.

11. -17 and -25

$-17 > -25$

12. -2.5 and 1.7

$-2.5 < 1.7$

13. $-\frac{3}{4}$ and $\frac{1}{4}$

$-\frac{3}{4} < \frac{1}{4}$

14. $\frac{1}{3}$ and 0.7

$0.\bar{3}$

$\frac{1}{3} < 0.7$

(22)

Order the following numbers from least to greatest.

15. $-2, 4, -10, 19, 0$

$-10, -2, 0, 4, 19$

16. $\frac{1}{2}, -6, 0.45, -12.5, -\frac{1}{5}$
 $0.5 \qquad \qquad \qquad -0.2$

$-12.5, -6, -\frac{1}{5}, 0.45, \frac{1}{2}$

17. $-\frac{1}{2}, -\frac{2}{3}, 8, -1.5, 7.3$
 $0.5 \quad 0.6$

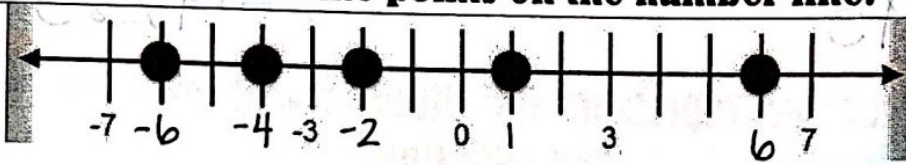
$-1.5, -\frac{2}{3}, -\frac{1}{2}, 7.3, 8$

18. $-21, 30, 18, 5, -77, 125$

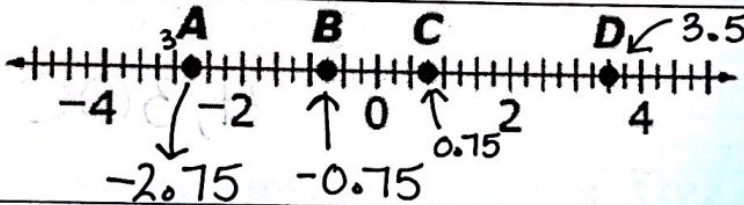
$-77, -21, 5, 18, 30, 125$

Label the points on the number line.

19.



20.



$A = -2.75$
 $B = -0.75$
 $C = 0.75$
 $D = 3.5$

Find the absolute value of the following questions.

21. $|6|$

$= 6$

22. $|-36|$

$= 36$

23. $-|25|$

$= -25$

24. $|5| + |-9|$

$= 14$

Change the following fractions to decimals. "Put the top dog in the house"

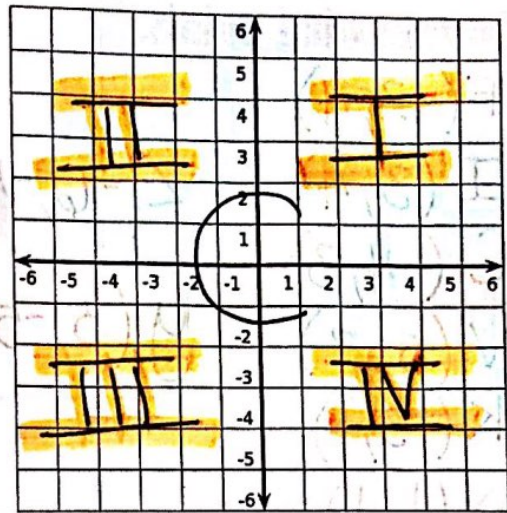
25. $\frac{1}{9}$

$= 0.\bar{1}$

26. $\frac{1}{6}$

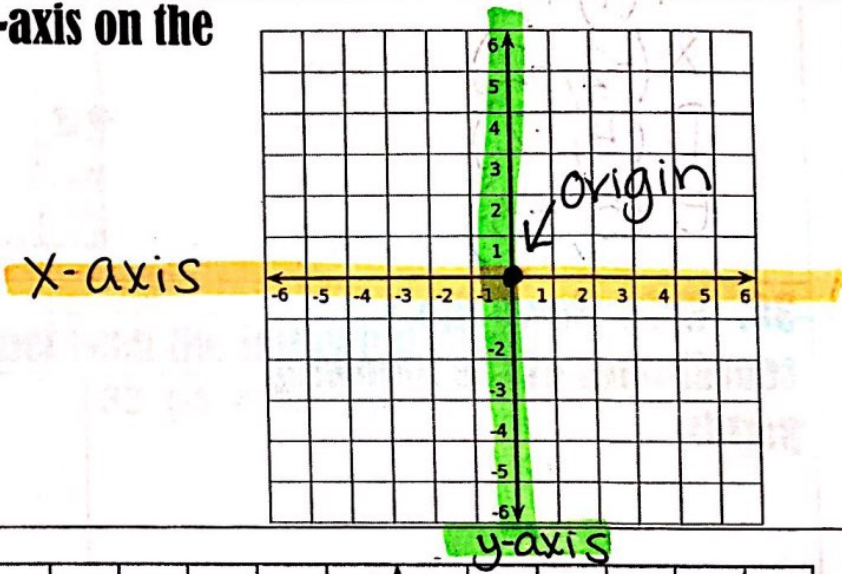
$0.1\bar{6}$

27. Label the quadrants on the coordinate plane.



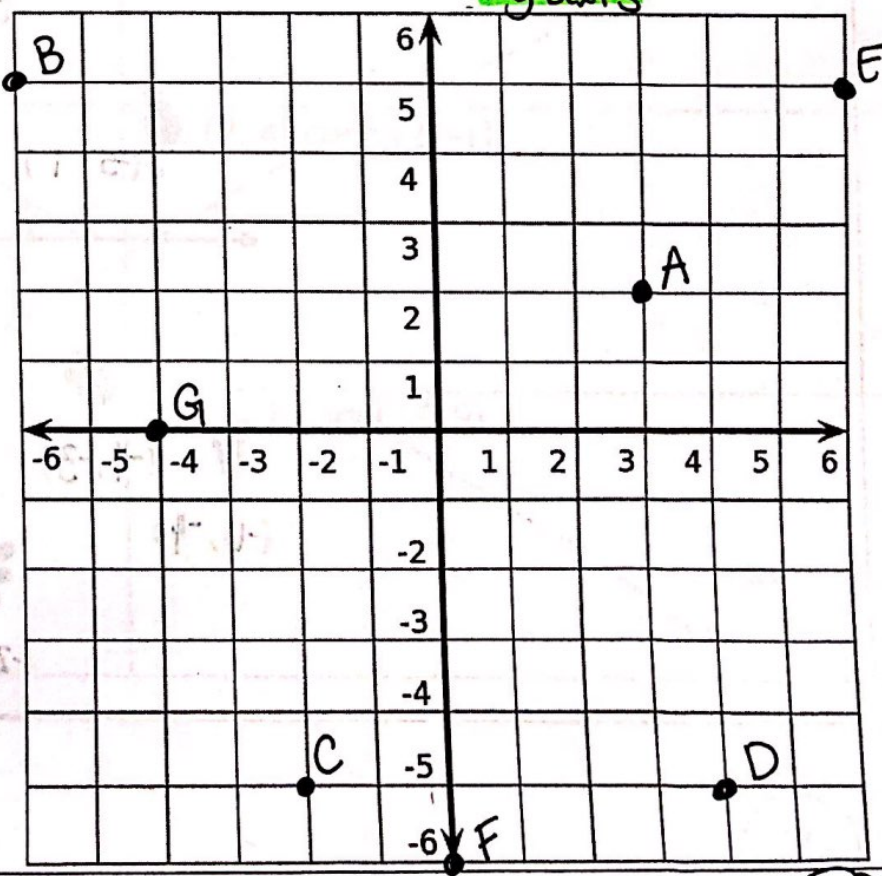
Handwritten notes on the right side of the grid, including the word 'quadrants' written vertically.

28. Label the origin, x-axis, and y-axis on the coordinate plane.



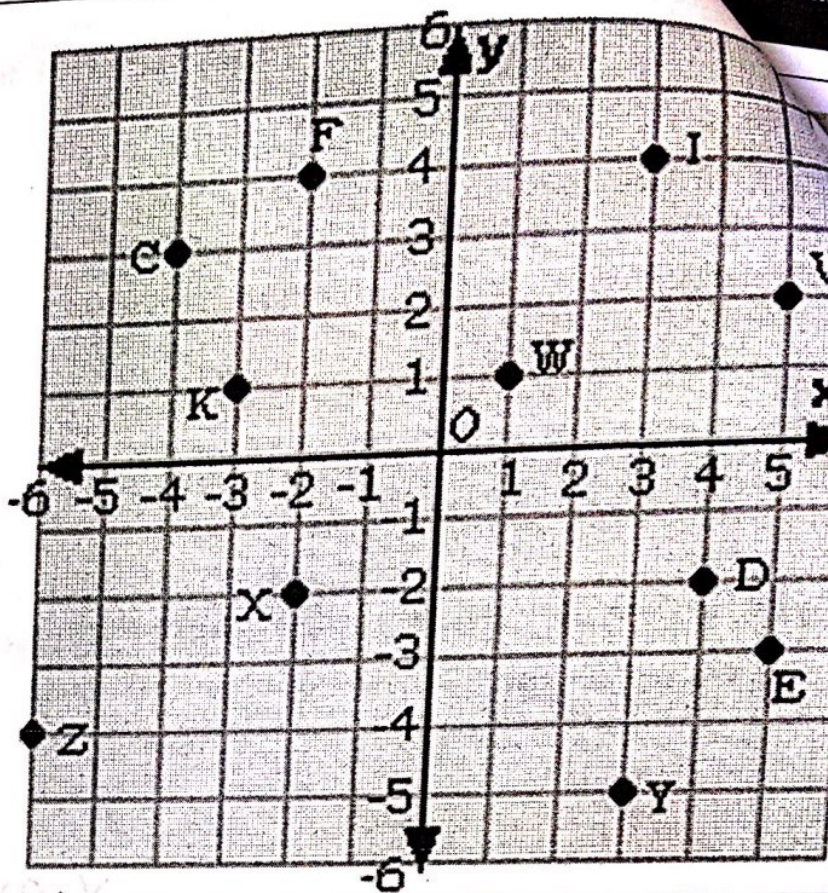
29. Plot and label the following points on the coordinate plane.

- A: (3, 2)
- B: (-6, 5)
- C: (-2, -5)
- D: (4, -5)
- E: (6, 5)
- F: (0, -6)
- G: (-4, 0)

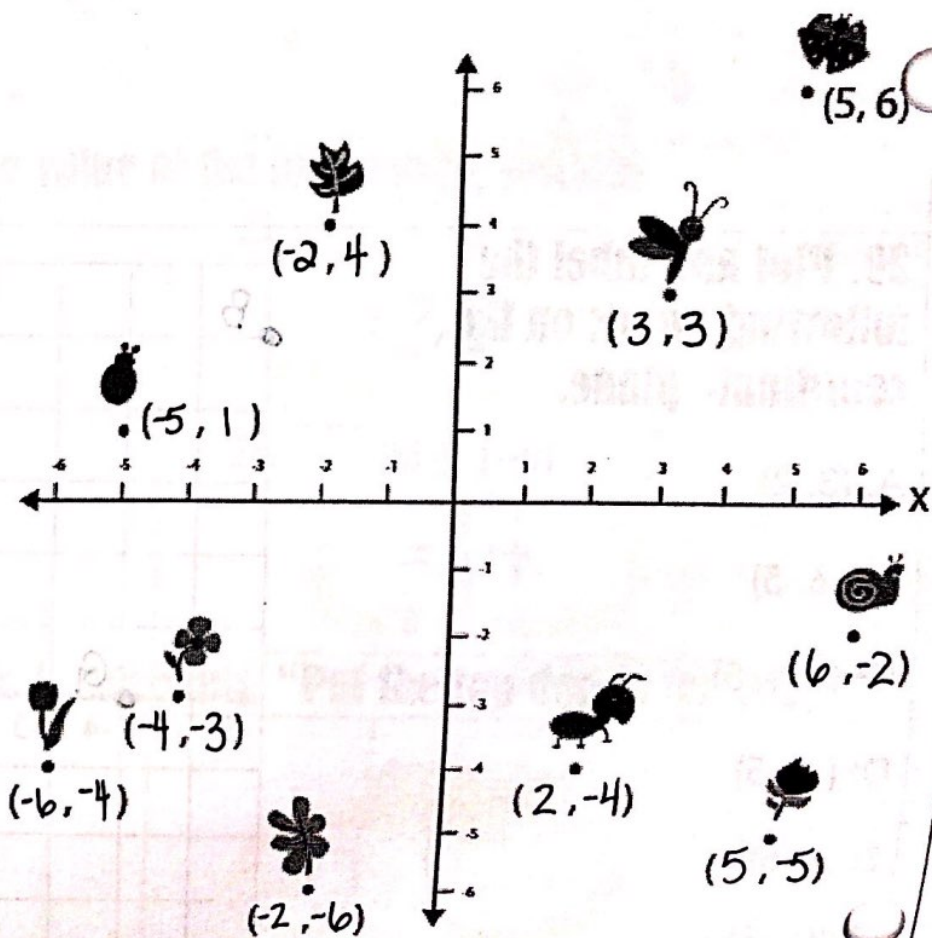


30. Write down the coordinates of the following points.

- A F(-2, 4)
- B I(3, 4)
- C (-4, 3)
- D V(5, 2)
- E K(-3, 1)
- F W(1, 1)
- G X(-2, -2)
- H D(4, -2)
- I E(5, -3)
- J Z(-6, -4)
- K Y(3, -5)



30. Write down the coordinates of the following points.



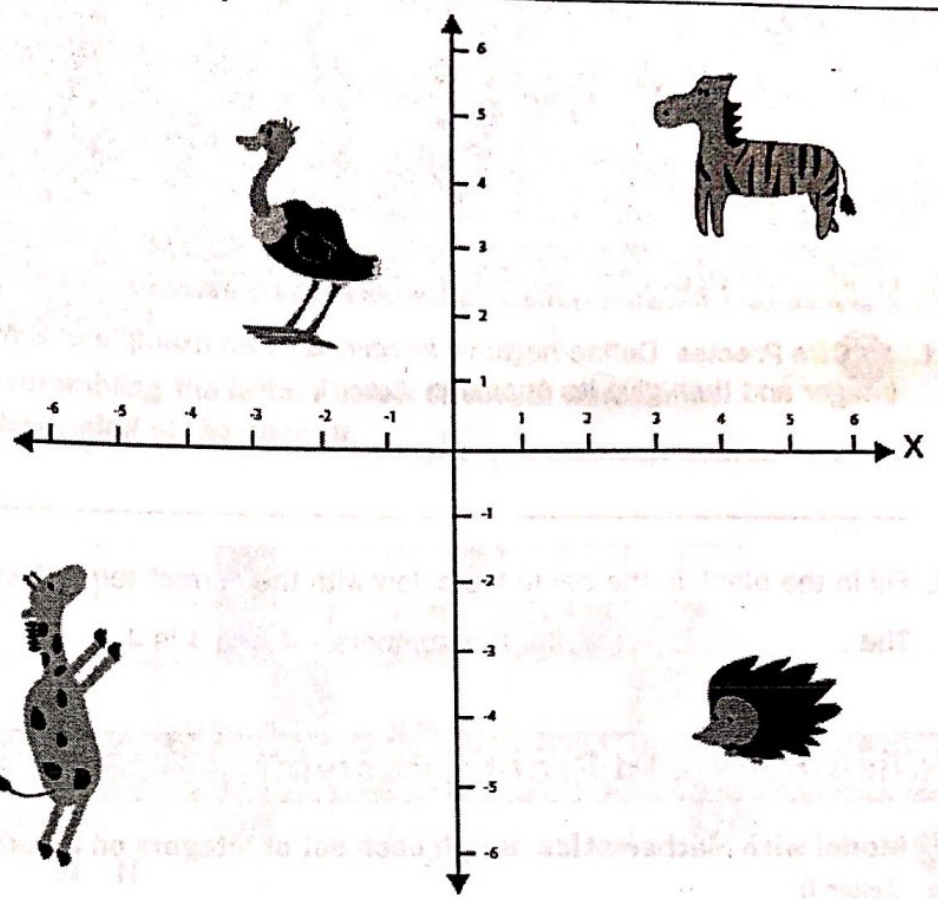
Write down the quadrant number for each animal.

bra: I

trich: II

raffe: III

rcupine: IV



Find the distance between the following points

31. (3, 0) and (7, 0)

33. (-5, 4) and (5, 4)

32. (0, 7) and (0, -8)

36. (2, 4) and (2, -1)

34. (3, 4) and (-4, 4)

38. (7, 1) and (7, 9)